

# BALTIMORE CITY HIV/AIDS EPIDEMIOLOGICAL PROFILE

## Second Quarter 2008 - Data reported through June 30, 2008

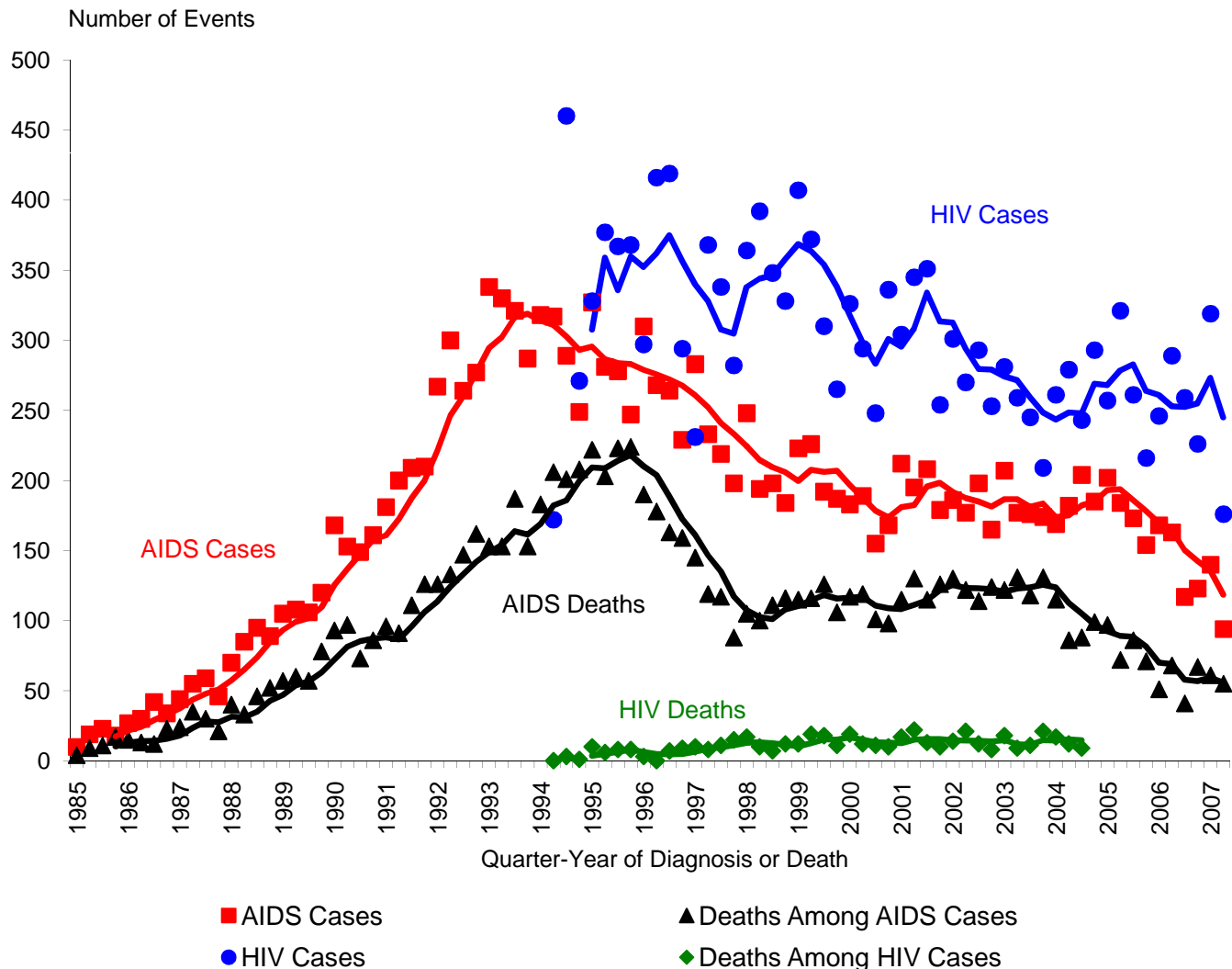
AIDS Administration  
 Maryland Department of Health and Mental Hygiene  
[www.dhmh.state.md.us/AIDS/](http://www.dhmh.state.md.us/AIDS/)  
 1-800-358-9001

### SPECIAL NOTE ON HIV REPORTING

The Maryland HIV/AIDS Reporting Act of 2007 became law on April 24, 2007. The law expanded HIV/AIDS reporting and required that HIV cases be reported by name. The reporting period presented in this report includes the first full year of the new reporting, however, most of the tables and figures are as of the end of code-reporting and are unaffected by this change. Section X has been modified to include the changes and future reports will have additional modifications. For additional information on HIV reporting please visit the AIDS Administration web site at the above address.

### Section I - Baltimore City HIV and AIDS Case Trends

**Incident (Newly Diagnosed) HIV and AIDS Cases and Deaths among HIV and AIDS Cases by Quarter-Year through Second Quarter 2007 as Reported through 6/30/08**



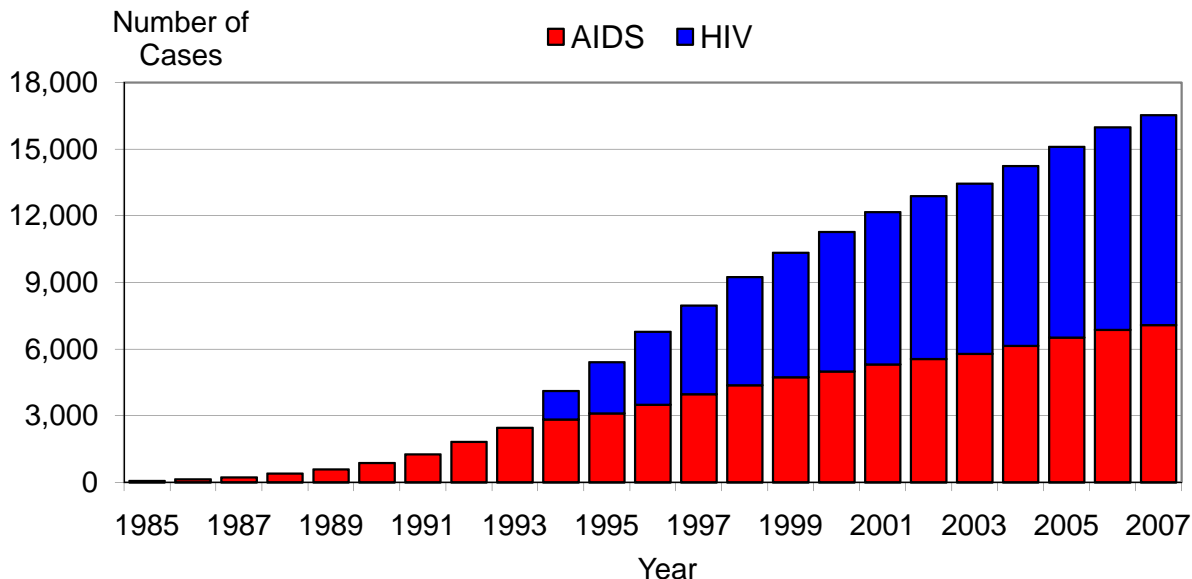
HIV case reporting began in June of 1994.

Trend lines are weighted moving averages (over 4 quarters).

# BALTIMORE CITY HIV/AIDS EPIDEMIOLOGICAL PROFILE - June 30, 2008

## Section II - Baltimore City HIV and AIDS Case Prevalence Trends

Prevalent (Living) HIV and AIDS Cases on December 31st of Each Year as Reported through 6/30/08



YEAR	HIV	AIDS	Total HIV/AIDS
1985		58	58
1986		130	130
1987		225	225
1988		396	396
1989		586	586
1990		877	877
1991		1,265	1,265
1992		1,817	1,817
1993		2,454	2,454
1994	1,276	2,837	4,113
1995	2,297	3,108	5,405
1996	3,277	3,495	6,772
1997	3,997	3,969	7,966
1998	4,879	4,366	9,245
1999	5,601	4,734	10,335
2000	6,277	4,999	11,276
2001	6,856	5,314	12,170
2002	7,338	5,552	12,890
2003	7,671	5,786	13,457
2004	8,097	6,139	14,236
2005	8,587	6,526	15,113
2006	9,118	6,870	15,988
2007	9,447	7,085	16,532

Prevalent cases are alive on December 31st of the given year.  
June 30th for HIV in 2007

# BALTIMORE CITY HIV/AIDS EPIDEMIOLOGICAL PROFILE - June 30, 2008

## Section III - Baltimore City HIV and AIDS Case Geography

Incidence (Newly Diagnosed Cases) during 7/1/06-6/30/07 and Prevalence (Living Cases) on 6/30/07 as Reported through 6/30/08

ZIP CODE	Incidence				Prevalence				Total HIV/AIDS	
	HIV		AIDS		HIV		AIDS		No.	%
	No.	%	No.	%	No.	%	No.	%	No.	%
21201	45	5.3%	25	5.3%	578	6.7%	343	5.0%	921	5.9%
21202	52	6.1%	23	4.9%	694	8.1%	538	7.8%	1232	7.9%
21205	32	3.7%	14	3.0%	321	3.7%	300	4.3%	621	4.0%
21206	35	4.1%	28	5.9%	281	3.3%	264	3.8%	545	3.5%
21207	23	2.7%	12	2.5%	189	2.2%	179	2.6%	368	2.4%
21208	1	0.1%	0	0.0%	5	0.1%	4	0.1%	9	0.1%
21209	7	0.8%	3	0.6%	32	0.4%	25	0.4%	57	0.2%
21210	0	0.0%	2	0.4%	18	0.2%	11	0.2%	29	0.2%
21211	16	1.9%	3	0.6%	88	1.0%	78	1.1%	166	1.1%
21212	11	1.3%	11	2.3%	186	2.2%	163	2.4%	349	2.3%
21213	72	8.4%	32	6.8%	691	8.0%	548	7.9%	1239	8.0%
21214	12	1.4%	7	1.5%	80	0.9%	81	1.2%	161	1.0%
21215	79	9.3%	52	11.0%	860	10.0%	666	9.6%	1526	9.8%
21216	47	5.5%	30	6.4%	471	5.5%	450	6.5%	921	5.9%
21217	98	11.5%	64	13.6%	1095	12.7%	829	12.0%	1924	12.4%
21218	91	10.7%	37	7.9%	789	9.2%	648	9.4%	1437	9.3%
21222	1	0.1%	0	0.0%	5	0.1%	1	0.0%	6	0.0%
21223	63	7.4%	35	7.4%	627	7.3%	499	7.2%	1126	7.3%
21224	21	2.5%	17	3.6%	317	3.7%	218	3.0%	535	3.5%
21225	20	2.3%	13	2.5%	175	2.0%	150	2.2%	325	2.1%
21226	4	0.5%	1	0.2%	22	0.3%	14	0.2%	36	0.2%
21227	2	0.2%	0	0.0%	24	0.3%	1	0.0%	25	0.2%
21228	0	0.0%	0	0.0%	1	0.0%	1	0.0%	2	0.0%
21229	43	5.0%	26	5.5%	384	4.5%	342	5.0%	726	4.7%
21230	23	2.7%	15	3.2%	226	2.6%	177	2.6%	403	2.5%
21231	14	1.6%	8	1.7%	225	2.6%	185	2.7%	410	2.6%
21234	6	0.7%	0	0.0%	36	0.4%	28	0.4%	64	0.4%
21236	0	0.0%	0	0.0%	0	0.0%	0	0.0%	0	0.0%
21237	7	0.8%	0	0.0%	34	0.4%	14	0.2%	48	0.3%
21239	29	3.4%	13	2.8%	138	1.6%	151	2.2%	289	1.9%
Missing ZIP*	125		4		855		81		936	
<i>Baltimore City</i>	979	100.0%	475	100.0%	9447	100.0%	6989	100.0%	16436	100.0%

HIV case reporting began in 1994.

For code-based HIV cases reported 7/1/06 through 6/30/07, the median time from diagnosis to report was one month. For AIDS cases reported 7/1/07 through 6/30/08, the median time from diagnosis to report was three months.

\* Cases with missing ZIP were excluded from percent distributions.

# BALTIMORE CITY HIV/AIDS EPIDEMIOLOGICAL PROFILE - June 30, 2008

## Section IV - Baltimore City HIV and AIDS Case Demographics

Incidence (Newly Diagnosed Cases) during 7/1/06-6/30/07 and Prevalence (Living Cases) on 6/30/07 as Reported through 6/30/08

<u>GENDER</u>	<b>Incidence</b>				<b>Prevalence</b>					
	<u>HIV</u>		<u>AIDS</u>		<u>HIV</u>		<u>AIDS</u>		<u>Total HIV/AIDS</u>	
	No.	%	No.	%	No.	%	No.	%	No.	%
Male	628	64.3%	284	59.8%	5754	61.1%	4477	64.1%	10231	62.4%
Female	348	35.7%	191	40.2%	3662	38.9%	2512	35.9%	6174	37.6%
Missing*	3				31				31	
<b>TOTAL</b>	<b>979</b>	<b>100.0%</b>	<b>475</b>	<b>100.0%</b>	<b>9447</b>	<b>100.0%</b>	<b>6989</b>	<b>100.0%</b>	<b>16436</b>	<b>100.0%</b>

<u>RACE/ETHNICITY</u>	<b>Incidence</b>				<b>Prevalence</b>					
	<u>HIV</u>		<u>AIDS</u>		<u>HIV</u>		<u>AIDS</u>		<u>Total HIV/AIDS</u>	
	No.	%	No.	%	No.	%	No.	%	No.	%
White	91	11.9%	43	9.1%	817	10.2%	702	10.0%	1519	10.1%
African-American	667	87.1%	421	88.6%	7047	88.4%	6190	88.6%	13237	88.5%
Hispanic	1	0.1%	11	2.3%	36	0.5%	80	1.1%	116	0.8%
Other	7	0.9%	0	0.0%	71	0.9%	17	0.2%	88	0.6%
Missing*	213				1476				1476	
<b>TOTAL</b>	<b>979</b>	<b>100.0%</b>	<b>475</b>	<b>100.0%</b>	<b>9447</b>	<b>100.0%</b>	<b>6989</b>	<b>100.0%</b>	<b>16436</b>	<b>100.0%</b>

<u>AGE**</u>	<b>Incidence</b>				<b>Prevalence</b>					
	<u>HIV</u>		<u>AIDS</u>		<u>HIV</u>		<u>AIDS</u>		<u>Total HIV/AIDS</u>	
	No.	%	No.	%	No.	%	No.	%	No.	%
<5 (Pediatric)	2	0.2%	0	0.0%	14	0.1%	0	0.0%	14	0.1%
5-12 (Pediatric)	3	0.3%	0	0.0%	69	0.7%	14	0.2%	83	0.8%
13-19	37	3.8%	13	1.5%	92	1.0%	75	1.1%	167	1.0%
20-29	174	17.8%	46	9.7%	821	8.7%	300	4.3%	1121	6.8%
30-39	200	20.4%	101	21.3%	1671	17.7%	1034	14.8%	2705	23.5%
40-49	335	34.2%	183	38.5%	3716	39.3%	2936	42.0%	6652	40.5%
50-59	183	18.7%	98	20.6%	2381	25.2%	2079	29.7%	4460	27.1%
60+	45	4.6%	34	7.2%	683	7.2%	551	7.9%	1234	7.5%
<b>TOTAL</b>	<b>979</b>	<b>100.0%</b>	<b>475</b>	<b>100.0%</b>	<b>9447</b>	<b>100.0%</b>	<b>6989</b>	<b>100.0%</b>	<b>16436</b>	<b>100.0%</b>

HIV case reporting began in 1994.

\* Cases with missing race or gender were excluded from percent distributions.

\*\* For incident cases, age was at time of diagnosis. For prevalent cases, age was as of 6/30/07.

# BALTIMORE CITY HIV/AIDS EPIDEMIOLOGICAL PROFILE - June 30, 2008

## Section V - Baltimore City HIV/AIDS Case Expanded Demographics

Total HIV/AIDS Prevalence (Living Cases) on 6/30/07 as Reported through 6/30/08

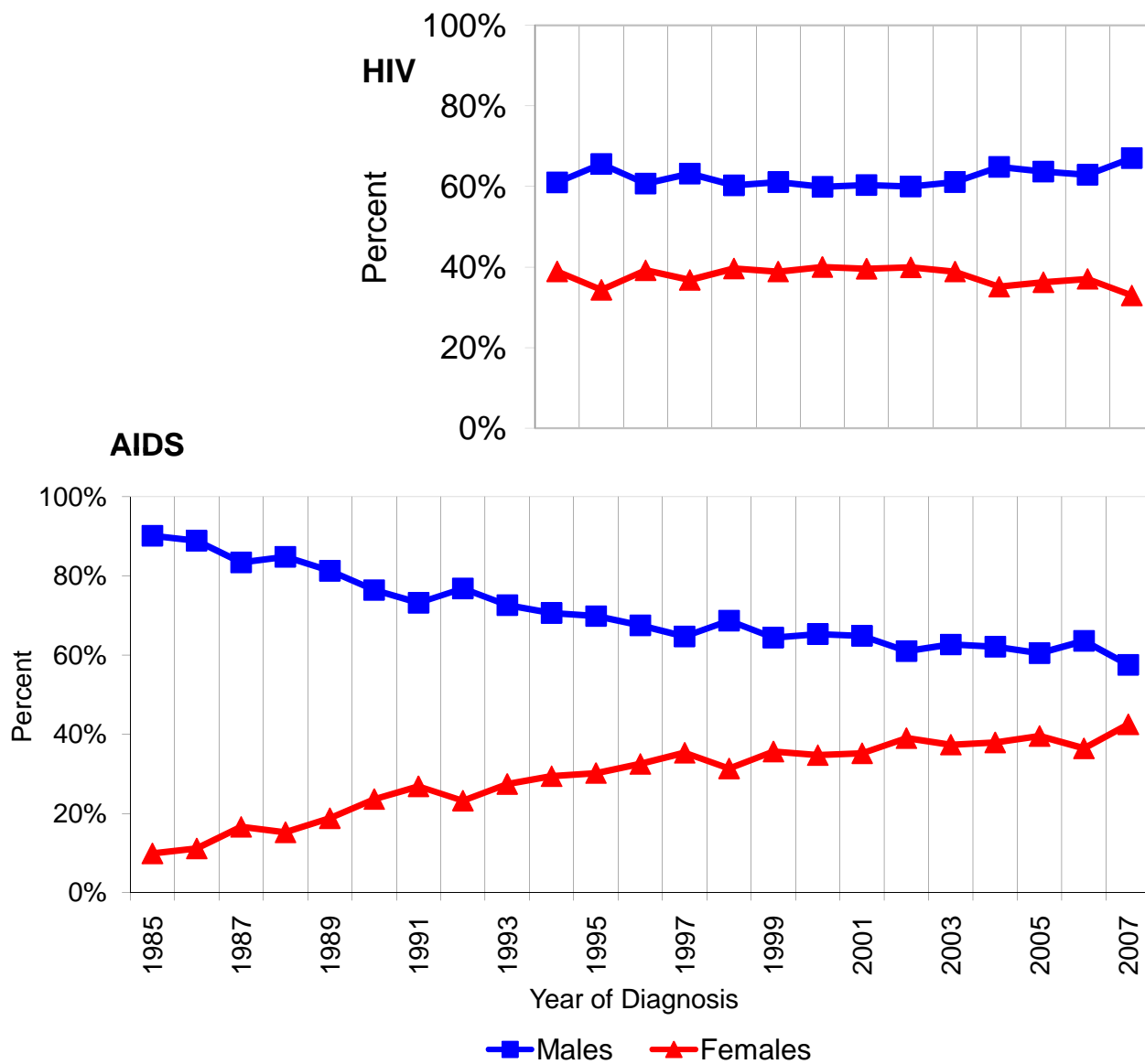
GENDER/AGE	RACE/ETHNICITY					Total	%
	<u>White</u>	<u>African-American</u>	<u>Other</u>	<u>Missing Race/Ethnicity</u>	No.		
	No.	No.	No.	No.	No.		
<u>Male</u>							
<5 (Pediatric)	0	5	0	3	8	0.1%	
5-12 (Pediatric)	4	38	1	8	51	0.6%	
13-19	2	73	0	7	82	0.8%	
20-29	35	551	17	59	662	6.5%	
30-39	198	956	26	104	1284	12.6%	
40-49	450	3255	60	306	4071	39.8%	
50-59	280	2612	26	238	3156	30.8%	
60+	102	699	17	99	917	6.1%	
<b>SUBTOTAL</b>	<b>1071</b>	<b>8189</b>	<b>147</b>	<b>824</b>	<b>10231</b>	<b>100.0%</b>	
<u>Female</u>							
<5 (Pediatric)	0	2	0	3	5	0.1%	
5-12 (Pediatric)	0	30	0	2	32	1.2%	
13-19	0	75	0	9	84	1.4%	
20-29	43	344	4	67	458	7.4%	
30-39	149	1073	15	182	1419	23.0%	
40-49	177	2173	24	194	2568	41.6%	
50-59	60	1091	11	132	1294	21.0%	
60+	17	251	1	45	314	5.1%	
<b>SUBTOTAL</b>	<b>446</b>	<b>5039</b>	<b>55</b>	<b>634</b>	<b>6174</b>	<b>100.0%</b>	
<u>Missing Gender</u>	2	9	2	18	31		
<b>TOTAL</b>	<b>1519</b>	<b>13237</b>	<b>204</b>	<b>1476</b>	<b>16436</b>		

HIV case reporting began in 1994.  
Age was as of 6/30/07.

# BALTIMORE CITY HIV/AIDS EPIDEMIOLOGICAL PROFILE - June 30, 2008

## Section VI - Baltimore City HIV and AIDS Case Gender Trends

Proportions by Gender of Incident (Newly Diagnosed) Cases during each Calendar Year as Reported through 6/30/08

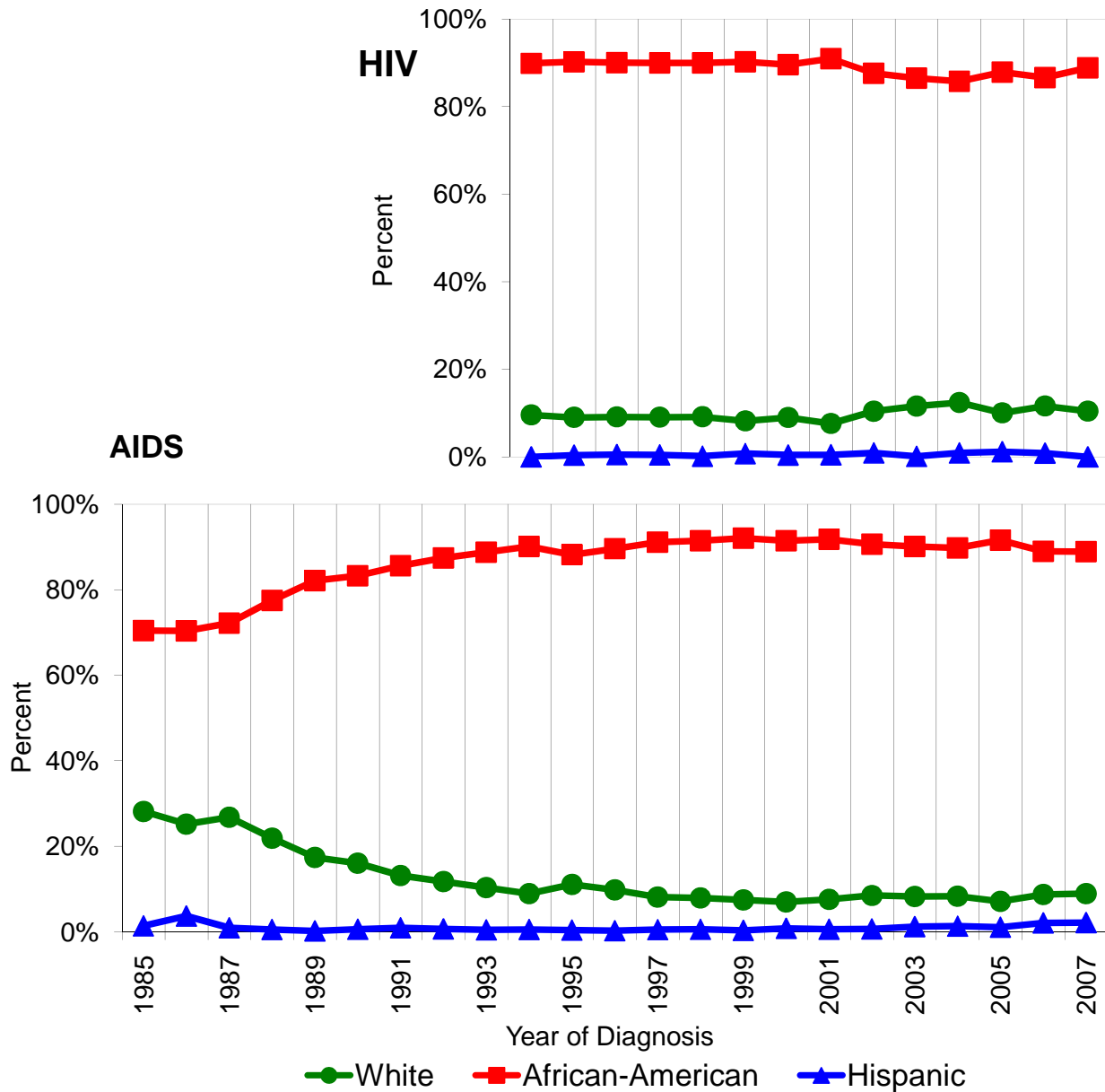


HIV case reporting began in 1994.

# BALTIMORE CITY HIV/AIDS EPIDEMIOLOGICAL PROFILE - June 30, 2008

## Section VII - Baltimore City HIV and AIDS Case Race/Ethnicity Trends

Proportions by Race/Ethnicity of Incident (Newly Diagnosed) Cases during each Calendar Year as Reported through 6/30/08

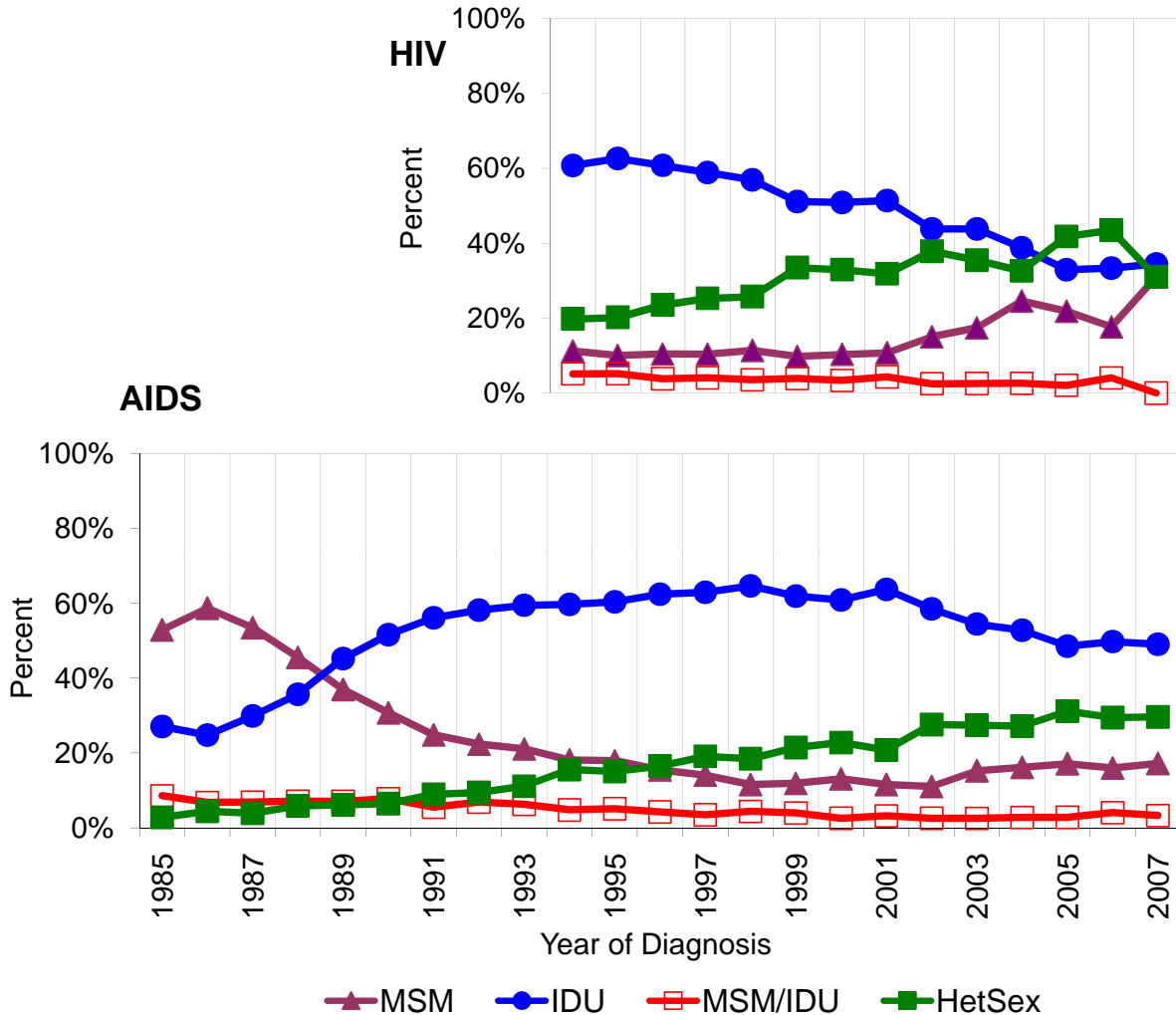


HIV case reporting began in 1994.

# BALTIMORE CITY HIV/AIDS EPIDEMIOLOGICAL PROFILE - June 30,2008

## Section VIII - Baltimore City AIDS Case Exposure Category Trends

Proportions by Exposure Category of Incident (Newly Diagnosed) Cases during each Calendar Year as Reported through 6/30/08



Other exposure categories (not shown) that accounted for small percentages of cases included hemophiliacs, transfusion recipients, pediatric transmissions and occupational exposures.

Percent distributions excluded cases with exposure category under investigation and risk not specified.

Baltimore City data had exposure on 57% of HIV cases and 96% of AIDS cases. HIV case reporting began in 1994.

MSM = Men who have sex with men

IDU = Injection drug users

MSM/IDU = Men who have sex with men and are injection drug users

HetSex = Heterosexual contact



# BALTIMORE CITY HIV/AIDS EPIDEMIOLOGICAL PROFILE - June 30, 2008

## Section IX - Comparisons to National Statistics

### AIDS Cases Reported during 1/1/06-12/31/06

Maryland had the third highest annual AIDS case report rate of any state or territory in 2006 (29.0 cases per 100,000 population) and Baltimore-Towson had the second highest rate of any metropolitan area in 2006 (37.7 cases per 100,000 population). The national rate in 2006 was 12.9 cases per 100,000 population.

### Ranking by AIDS case report rate, 2006\*

Rank	Metropolitan Area	Number	Rate**
1	Miami, FL	2,289	41.9
2	Baltimore-Towson, MD	1,001	37.7
3	Washington, DC-VA-MD-WV	1,684	31.8
4	Baton Rouge, LA	231	30.1
5	New York, NY-NJ-PA	5,500	29.2
6	Columbia, SC	197	28.0
7	Memphis, TN-MS-AR	346	27.1
8	New Orleans-Metairie-Kenner, LA	271	26.4
9	Orlando, FL	517	26.0
10	Jacksonville, FL	315	24.6

### HIV and AIDS Cases Reported through 12/31/05

In 2005, the Baltimore eligible metropolitan area was ranked sixth in the nation for the number of prevalent (living) HIV and AIDS cases as reported under the Ryan White HIV/AIDS Treatment Modernization Act Of 2006.

### Ranking by prevalent (reported living) HIV and AIDS cases, December 2005\*\*\*

Rank	Metropolitan Area	HIV	AIDS	HIV+AIDS
1	New York, NY	31,322	58,609	89,931
2	Los Angeles-Long Beach, CA	12,691	19,965	32,656
3	Washington, DC-MD-VA-WV	8,525	16,054	24,579
4	Chicago, IL	11,042	12,809	23,851
5	Miami, FL	10,166	12,965	23,131
6	Baltimore, MD	10,549	8,415	18,964
7	Philadelphia, PA-NJ	6,649	11,840	18,489
8	Houston, TX	7,152	10,256	17,408
9	San Francisco, CA	6,392	8,114	14,506
10	Fort Lauderdale, FL	6,198	7,443	13,641

\*Centers for Disease Control and Prevention. HIV/AIDS Surveillance Report, 2006; 18:29-38.

\*\*Rate is number of cases per 100,000 population. Population was based on 2006 estimate.

\*\*\*Centers for Disease Control and Prevention. HIV/AIDS Data through December 2005.

Provided for the Ryan White HIV/AIDS Treatment Modernization Act of 2006, for Fiscal Year 2007.  
HIV/AIDS Surveillance Supplemental Report, 2008; 13 (No.3):11-12.

Note: The Baltimore metropolitan area was renamed the Baltimore-Towson metropolitan area and consists of Baltimore City, and Anne Arundel, Baltimore, Carroll, Harford, Howard, and Queen Anne's counties.

# BALTIMORE CITY HIV/AIDS EPIDEMIOLOGICAL PROFILE - June 30, 2008

## Section X - Baltimore City HIV and AIDS Case Reports by ZIP Code

### Cumulative Events Reported through 6/30/08

ZIP CODE	HIV Cases				AIDS Cases		AIDS Deaths	
	by Code		by Name		Cumulative		Cumulative	
	No.	%	No.	%	No.	%	No.	%
21201	601	6.8%	126	4.3%	879	5.3%	535	5.7%
21202	735	8.3%	178	6.0%	1327	8.1%	779	8.3%
21205	331	3.7%	125	4.2%	675	4.1%	364	3.9%
21206	285	3.2%	107	3.6%	473	2.9%	205	2.2%
21207	191	2.2%	69	2.3%	391	2.4%	201	2.1%
21208	5	0.1%	2	0.1%	5	0.0%	1	0.0%
21209	33	0.4%	10	0.3%	54	0.3%	30	0.3%
21210	18	0.2%	7	0.2%	35	0.2%	24	0.3%
21211	90	1.0%	29	1.0%	174	1.1%	94	1.0%
21212	185	2.1%	62	2.1%	393	2.4%	225	2.4%
21213	722	8.1%	229	7.8%	1311	8.0%	753	8.0%
21214	80	0.9%	29	1.0%	143	0.9%	59	0.6%
21215	870	9.8%	270	9.2%	1673	10.2%	1006	10.7%
21216	498	5.6%	174	5.9%	1070	6.5%	612	6.5%
21217	1141	12.8%	386	13.1%	2159	13.1%	1320	14.0%
21218	807	9.1%	296	10.0%	1551	9.4%	890	9.5%
21222	5	0.1%	1	0.0%	5	0.0%	4	0.0%
21223	654	7.4%	227	7.7%	1195	7.3%	675	7.2%
21224	333	3.7%	129	4.4%	478	2.9%	248	2.6%
21225	176	2.0%	75	2.5%	371	2.3%	219	2.3%
21226	23	0.3%	11	0.4%	26	0.2%	9	0.1%
21227	24	0.3%	2	0.1%	5	0.0%	4	0.0%
21228	1	0.0%	0	0.0%	2	0.0%	1	0.0%
21229	391	4.4%	149	5.1%	811	4.9%	447	4.8%
21230	236	2.7%	98	3.3%	405	2.5%	223	2.4%
21231	234	2.6%	85	2.9%	417	2.5%	228	2.4%
21234	36	0.4%	2	0.1%	52	0.3%	24	0.3%
21236	0	0.0%	0	0.0%	0	0.0%	0	0.0%
21237	35	0.4%	1	0.0%	37	0.2%	24	0.3%
21239	141	1.6%	69	2.3%	352	2.1%	195	2.1%
Missing ZIP*	865		52		172		90	
<i>Baltimore City</i>	9746	100.0%	3000	100.0%	16641	100.0%	9489	100.0%

Laboratory reporting of HIV cases by code existed from June 1, 1994 to April 24, 2007.

Provider and laboratory reporting of HIV cases by name has existed since April 24, 2007.

Maryland is re-reporting code HIV cases by name, therefore, the same person may appear as a code HIV case and as a name HIV case.

HIV cases reported by name since 4/24/07 may also have been reported as AIDS cases.

Non-AIDS cumulative HIV cases included all HIV cases reported through the end of the period, that had not been reported as AIDS cases by the end of the period.

AIDS deaths included all causes of death.

The median time from diagnosis to report was one month for HIV code cases, 23 months for HIV name cases, and four months for AIDS cases.

\* Cases with missing ZIP were excluded from percent distributions.